

20/07/2008 18:13:44
Velocid.: 2.8 %

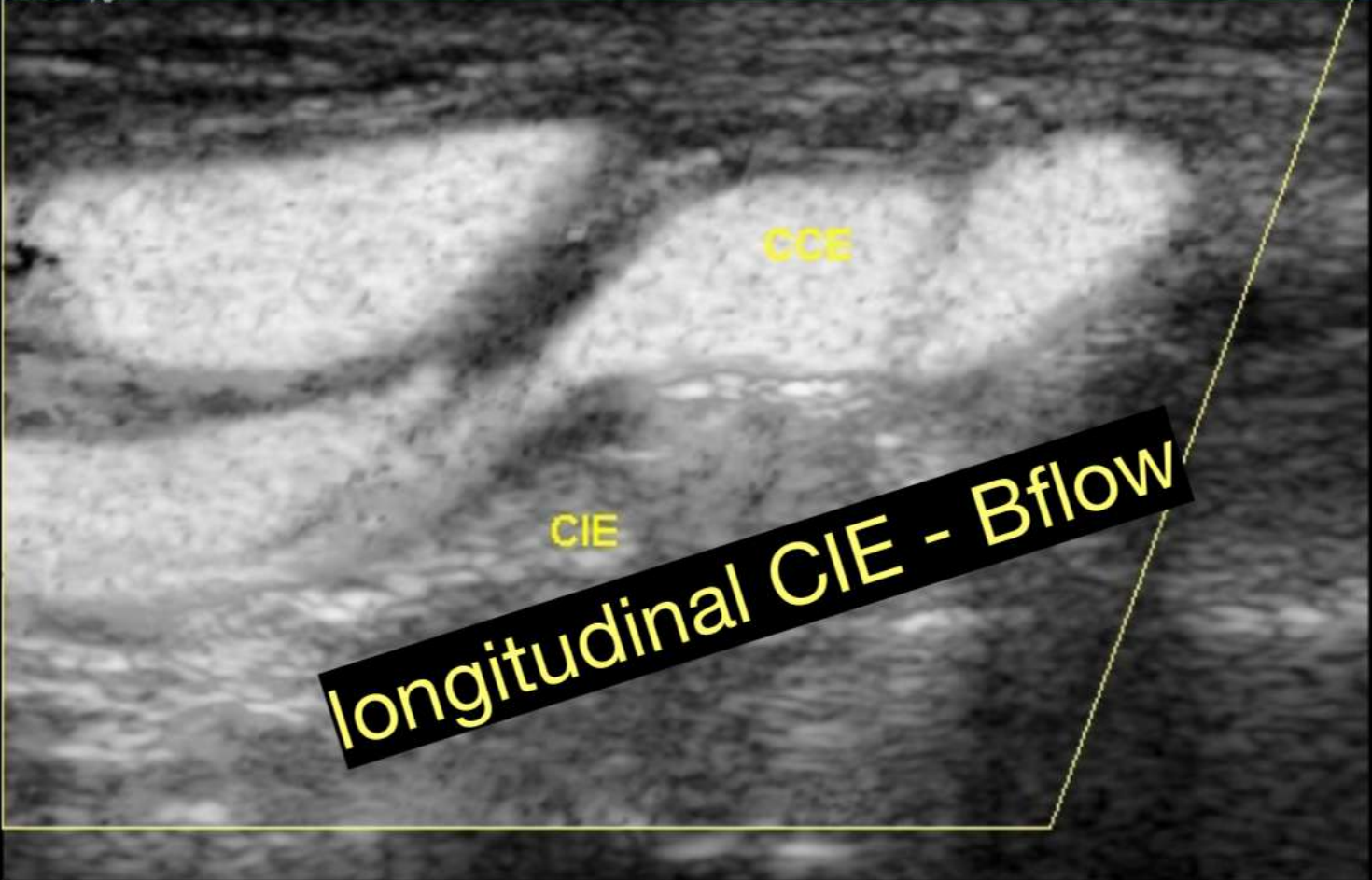
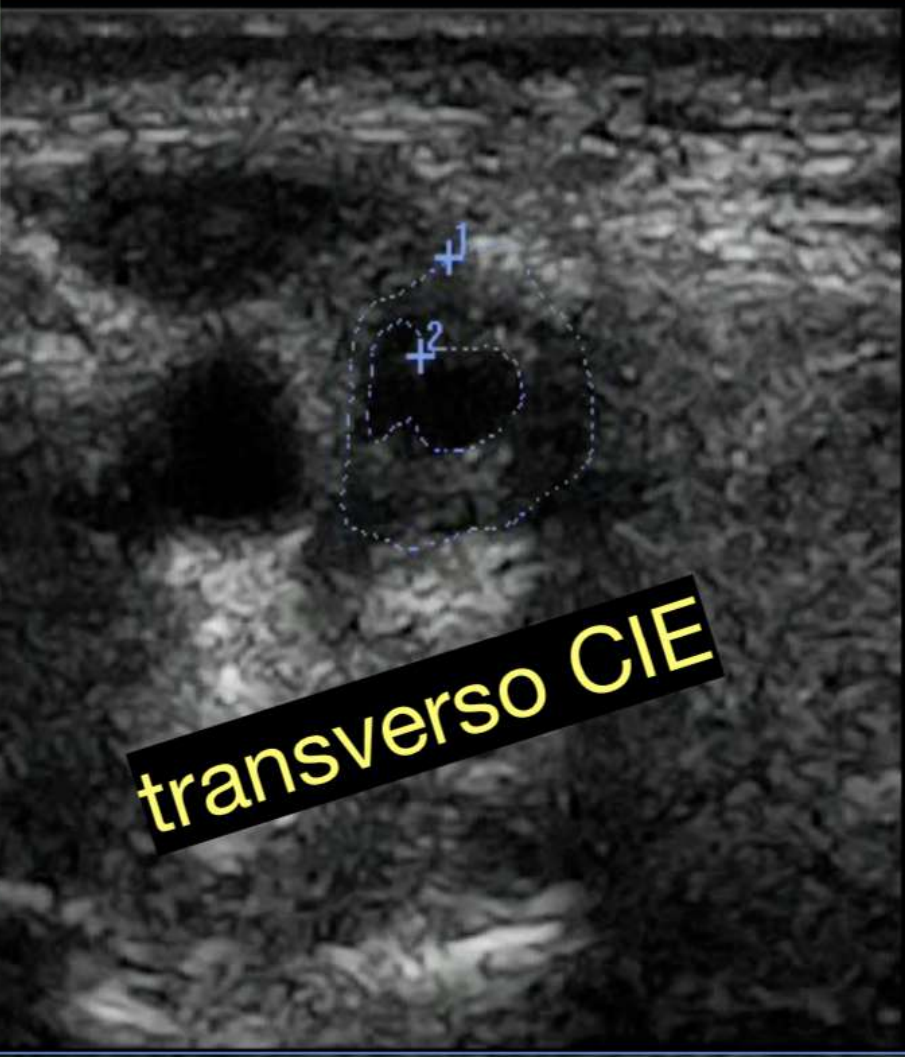
.20
-0.20

CIE
longitudinal CIE Color

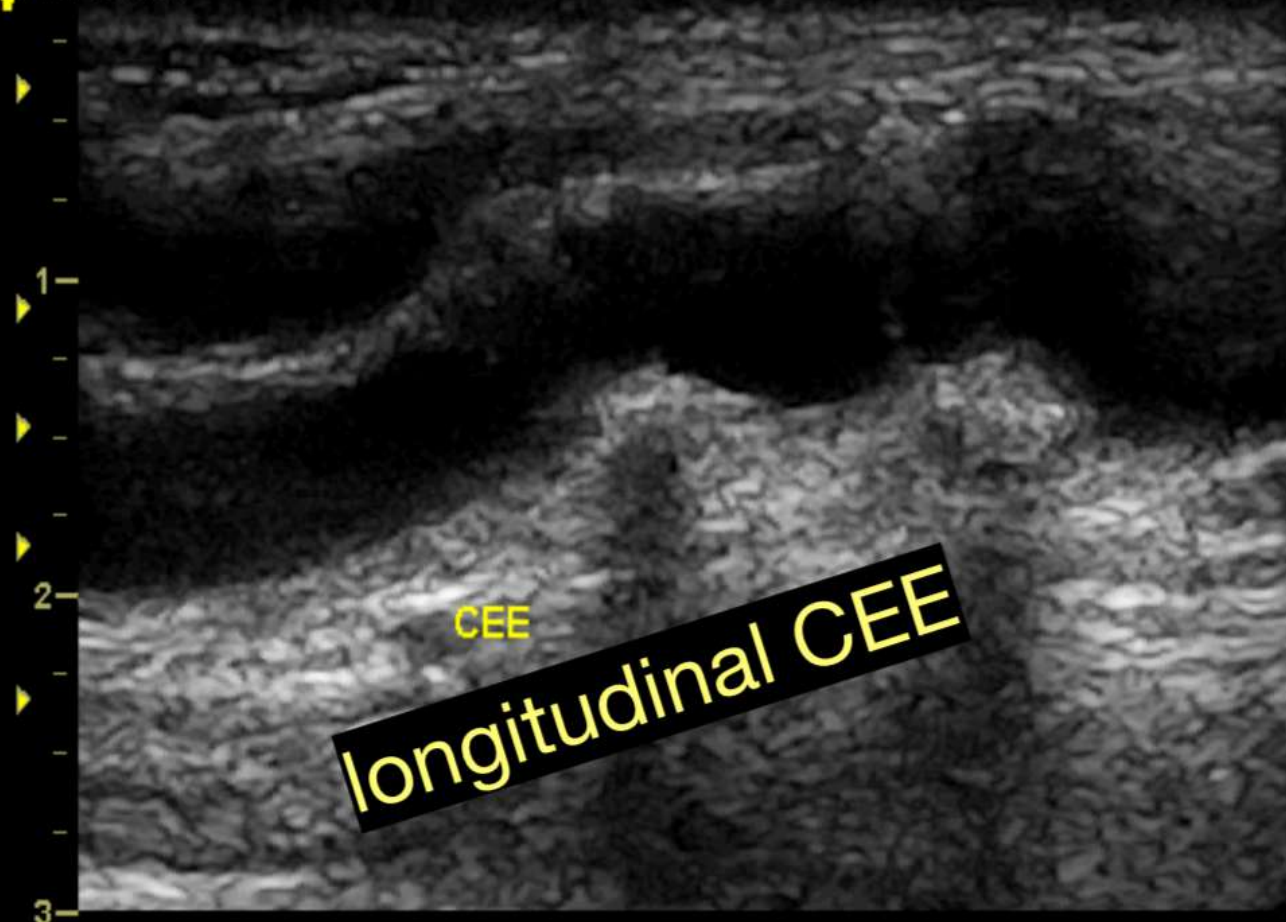
CIE
longitudinal CIE Power



Rt %Esten(Área)	75.85 %
2 Rt A2	0.14 cm ²
1 Rt A1	0.58 cm ²

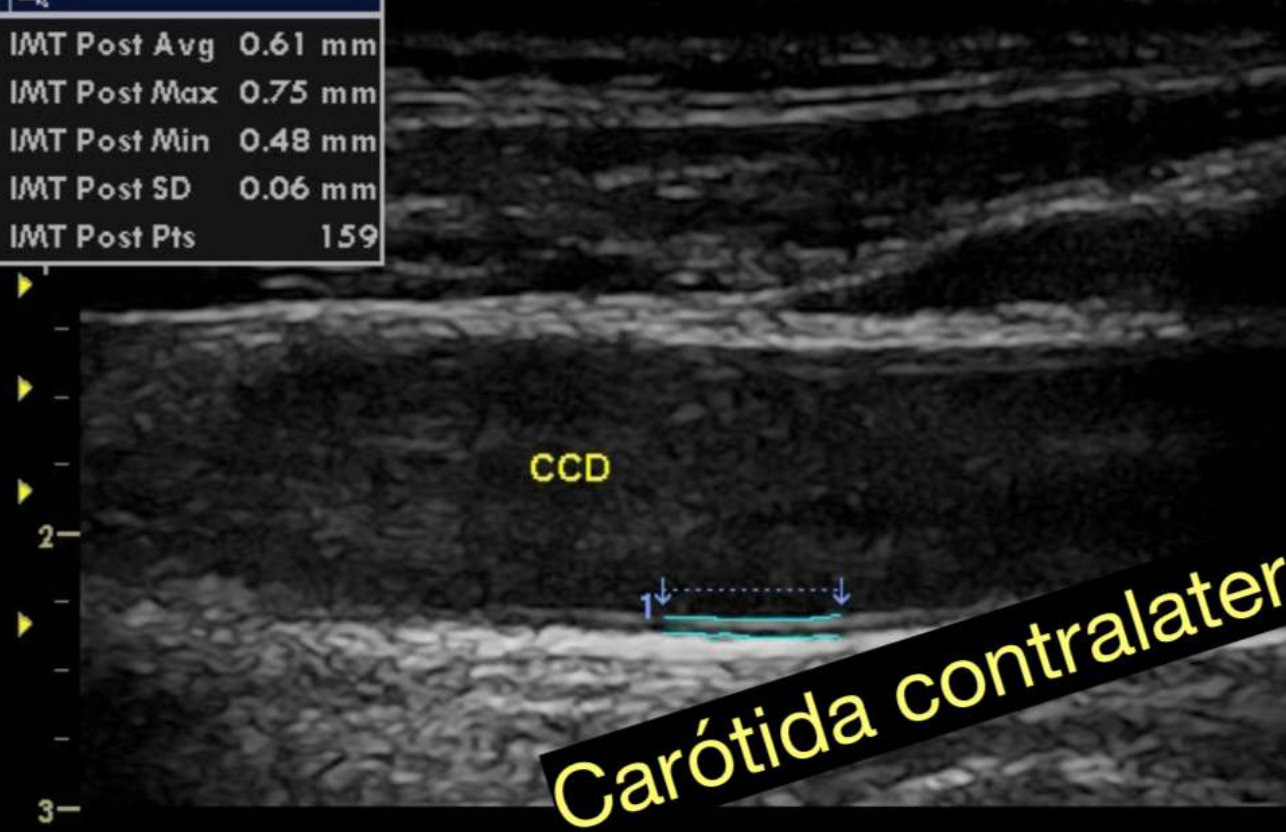


20/07/2008 18:13:01



longitudinal CEE

●	IR2	
1	IMT Post Avg	0.61 mm
	IMT Post Max	0.75 mm
	IMT Post Min	0.48 mm
	IMT Post SD	0.06 mm
	IMT Post Pts	159



CCD

Carótida contralateral